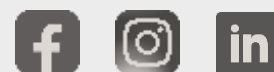




Practical Planning Steps to **Renew Your Worship Space**

LEARN MORE ABOUT GDG:

www.gdg-architects.com



Who we are



TODD DVORAK

AIA, ACLS
Religious Studio Leader,
Project Manager

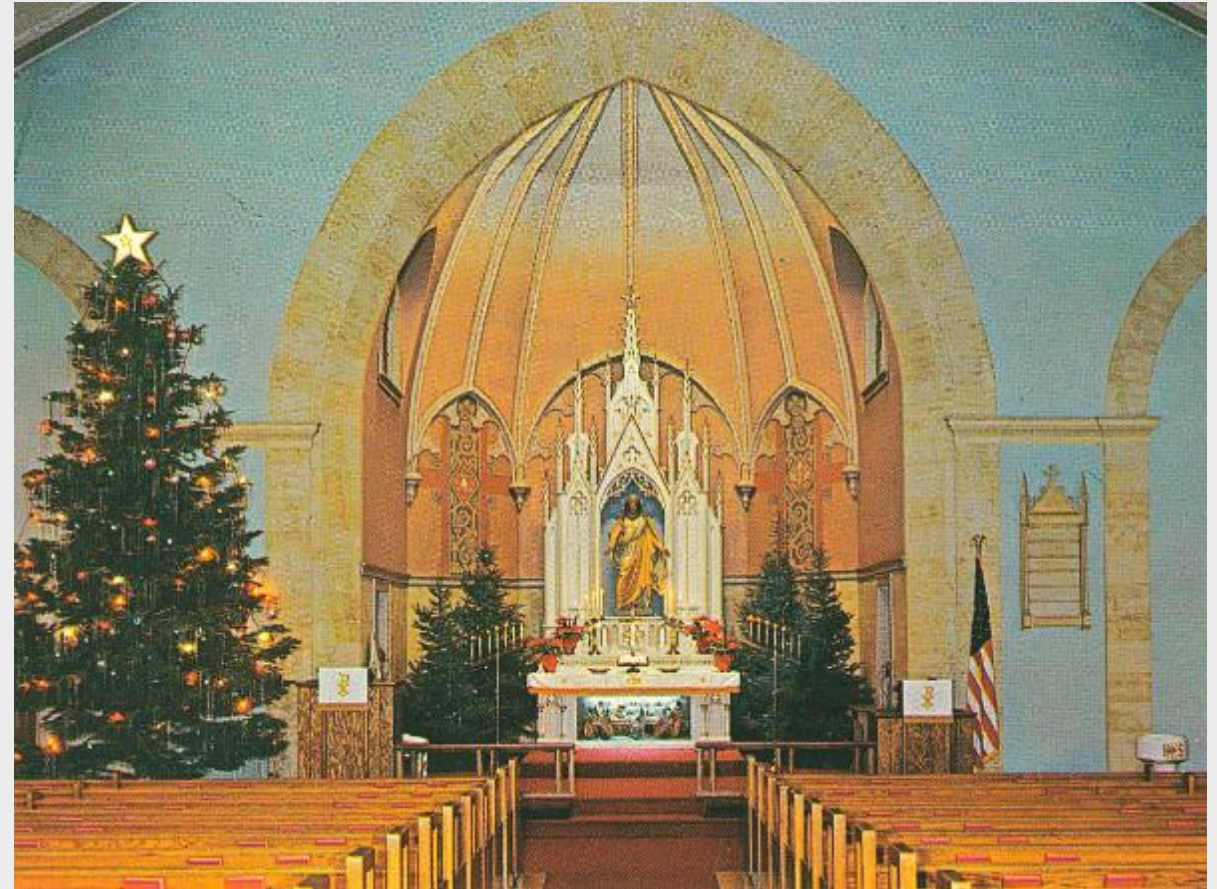
GROTH Design Group



PASTOR
MARK TIEFEL

Lead Pastor

Emanuel Lutheran Church



Topics

Problems and possibilities

People and partnerships

Process and planning



Problems | Function & Aesthetic



Problems | Function & Aesthetic



Problems | Function & Aesthetic



Problems | Function & Aesthetic



Problems | Improving Accessibility



Problems | Lighting / Materials



Problems | Lighting / Materials



Problems | Lighting / Music



Problems | Music Diversity & Materials



Problems | Liturgical



Problems | Case study - Emanuel



Problems | Case study - Emanuel



Problems | Case study - Emanuel



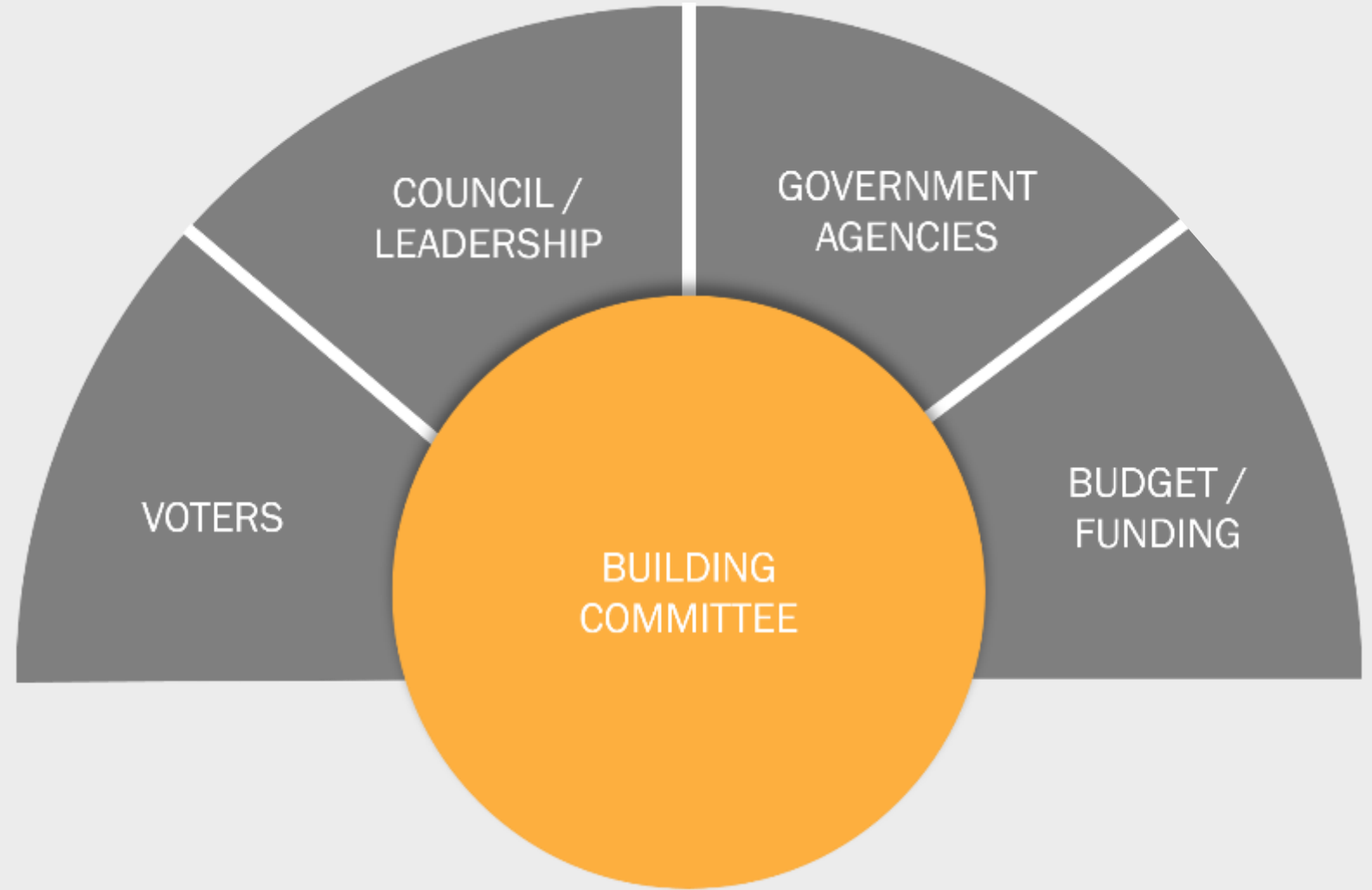
Problems | Case Study - Emanuel



The following list was compiled by Emanuel Lutheran’s Boards, Committees, and Council, then submitted to a voter’s assembly to form a “sanctuary study committee.”

Type of Issue	Issue Description
Acoustical	Assess/replace electronic Organ
Acoustical	Assess/repair acoustical ceiling and wall tiles
Architectural	Assess/improve traffic flow and seating capacity in nave
Architectural	Assess/improve layout and furnishings in chancel area
Architectural	Assess/improve layout and seating in balcony
Architectural	Assess/improve layout and lighting of narthex/atrium
Systems	Assess/improve sanctuary lighting
Systems	Assess/inspect sanctuary electrical
Systems	Optimize/improve sanctuary hearing loop
Systems	Assess/inspect sanctuary-narthex air handling
Structural	Inspect Sanctuary Stained Glass Integrity
Structural	Inspect/assess church basement drainage
Structural	Inspect/assess safety and function of church bell
Structural	Inspect/assess sanctuary space for asbestos

People | Internal Influencers



People | Emanuel Lutheran



Visioning Workshops | 131 people attended a two-hour workshop facilitated by Paul Barribeau of GROTH Design Group. The workshop produced 12 pages of notes, followed by a dozen focus groups for various components of the “sanctuary” project.

Entry and Hospitality

- Having an information center staffed by people was a good idea. Sometimes it would get crowded.
- Parking! Large events can get crowded... does that serve as a deterrent? ... develop in adequate ... outside

Service Spaces

- Have we considered church entry-way security?
- Entrance #1 is inviting and “obvious”. But Entrance #11 doesn’t help people know where to go.
- Lack of ventilation in restrooms? Is our building sick with mold or asbestos?

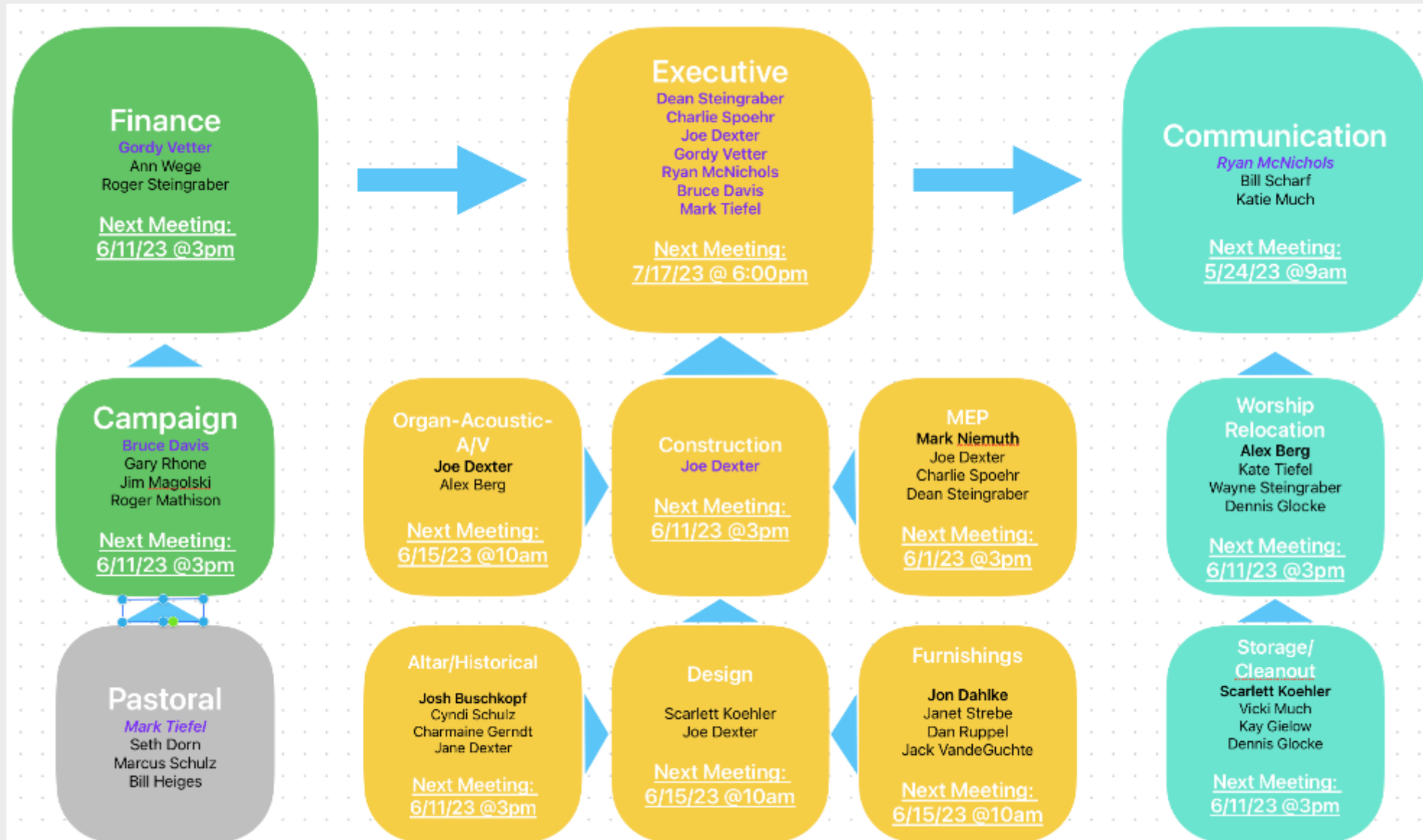
Liturgy and Music Areas

- Lectern and Pulpit no longer ‘match’ the artistic altar.
- Tight space around the piano, especially

The Place of Worship

- Pew seating prevents the space from being reorganized as needed.
- High schoolers mentioned narrow spacing between pews are an issue.
- Seating from the far sides might benefit from an angled (concave) view.
- Lighting, especially for the pastors... Acoustics...
- The T-Loop isn’t reliable.

People | Emanuel Lutheran



People | External Influencers



Process | Building the “Team”



STEP 1

ARCHITECTURE
SELECTION

Process | Building the “Team”



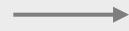
STEP 1

ARCHITECTURE
SELECTION



STEP 2

GATHER
SPECIALIZED
CONSULTANTS



STRUCTURAL ENGINEER

CIVIL ENGINEER

MEP CONSULTANTS

INTERIOR DESIGN

ACOUSTICAL CONSULTANT

A/V TECH CONSULTANT

LITURGICAL CONSULTANT

Process | Building the “Team”



STEP 1

ARCHITECTURE
SELECTION



STEP 2

GATHER
SPECIALIZED
CONSULTANTS



STEP 3

GENERAL
CONTRACTOR
SELECTION

Process | Building the “Team”



STEP 1

ARCHITECTURE
SELECTION



STEP 2

GATHER
SPECIALIZED
CONSULTANTS



STEP 3

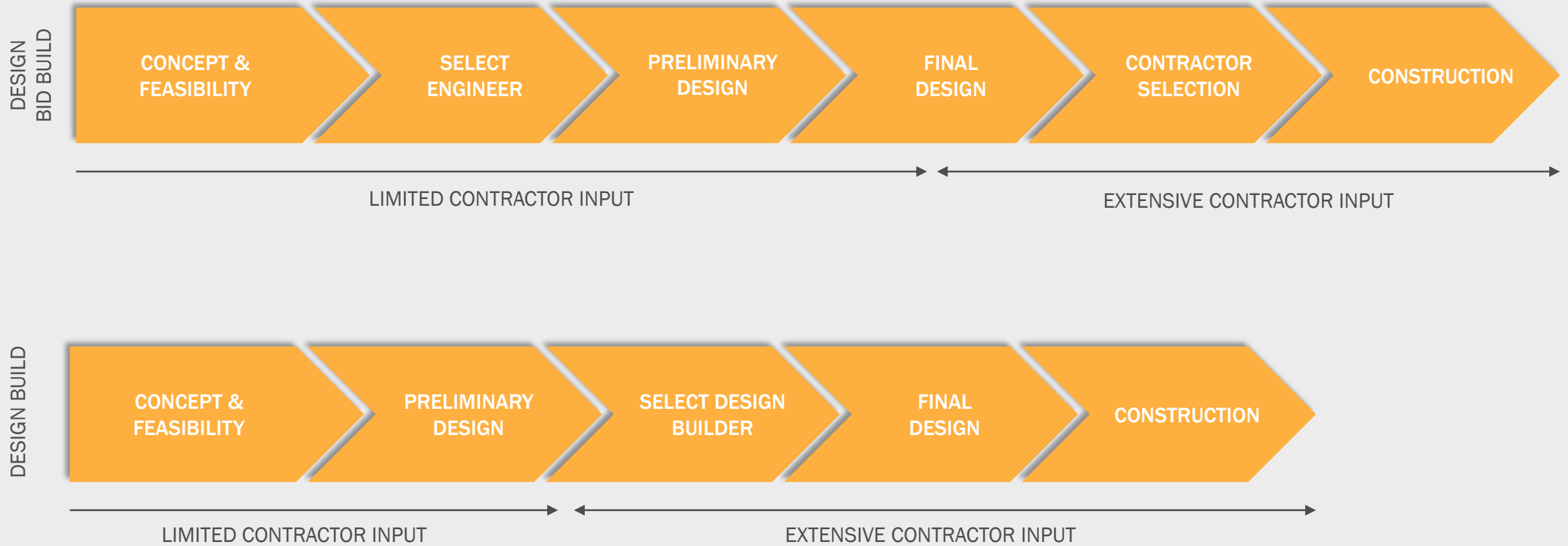
GENERAL
CONTRACTOR
SELECTION



STEP 4

GENERAL
CONTRACTOR
LEADS
SELECTION OF
SUBCONTRACTORS

Process | Design-Build vs. Design-Bid-Build



Case Study | Emanuel Lutheran



LIGHT FIXTURE SCHEDULE			
ID	DESCRIPTION	QUANTITY	WATTAGE
AA	2X4 FLAT PANEL FIELD SELECTABLE LUMENS	25	3000
AB	2X4 FLAT PANEL FIELD SELECTABLE LUMENS WITH DECORATIVE LENS OVERLAY	76	3000
BA	1X4 FLAT PANEL FIELD SELECTABLE LUMENS	78	3000
CA	2X2 FLAT PANEL	20	3000

- Replace radiator covers with discreet aesthetic grilles. Install sink and refrigerator in working sacristy to assist with baptism and communion.

Floors, Ceilings, and Safety

- Structural repairs to compromised attic joists, including a safety catwalk in the attic.
- Complete removal of sanctuary ceiling: failing acoustical tile and failing original plaster system
- Stabilization of sanctuary sub-floor to improve sound, slope, and durability
- Complete abatement of hazardous material. Removal of asbestos adhesive in the sanctuary and narthex ceilings.



in the balcony with ADA

maker's lounge to needs.

APPROVED April 2019 **VOTE #1: AD-HOC COMMITTEE** ✓
 Appoint an ad-hoc Sanctuary Committee to better understand the process of renovating our church sanctuary.

APPROVED APRIL 2022 **VOTE #2: ORGAN COMMITTEE** ✓
 Appoint an ad-hoc Organ Committee to better understand the process of replacing our current instrument.

APPROVED APRIL 2022 **VOTE #3: PROJECT SCOPE** ✓
 Affirm the full intentions of our stated objectives and plans - to bring the FORWARD project to completion.

VOTE #4: PIPE ORGAN ✓
 Enter into Contract with Parsons Pipe Organ Builders for a 3-Manual Pipe Organ

VOTE #5: ARCHITECT ✓
 Enter into Contract with Groth Design Group for Architectural Services

APPROVED January 2023 **VOTE #6: PRE-CONSTRUCTION** ✓
 Establish an agreement with Miron Construction for Pre-Construction Services

VOTE #7: GENERAL CONTRACTOR ✓
 Establish Miron Construction as Constructor where the basis of payment is the Cost of Work Plus a Fee with a Guaranteed Maximum Price

APPROVED April 2023 **VOTE #8: ALTAR DESIGN** ✓
 Approve the proposal for altar and sanctuary design, as proposed by the Forward Design Committee.

VOTE #9: LOAN APPROVAL ✓
 Approve the terms of a construction loan of \$6.2M, as proposed by *Wolf River Community Bank.

VOTE #10: PROJECT APPROVAL ✓
 Approve the scope and schedule of construction to begin under the direction of our Church Council and Forward Construction committees, and as proposed by Miron Construction Inc.

Problems | Case Study - Emanuel



Problems | Case study - Emanuel



Problems | Case study - Emanuel





thank you!

CONTACT US:

tdvorak@gdg-architects.com
gdg-architects.com

mtiefel@emanuelnl.org
www.emanuelnl.org/forward

